



## DOCK-1050-UT INSTALLATION INSTRUCTIONS

Model: DOCK-1050-UT

Input: 125VAC 60Hz 15A

Output: (2) Tamper-Resistant AC outlets

(1) USB Type-A Port: 18W

(1) USB Type-C Port: 45W

### CAUTION:

*To prevent the risk of fire and electric shock, please be sure to read all instructions before installing or using this unit.*

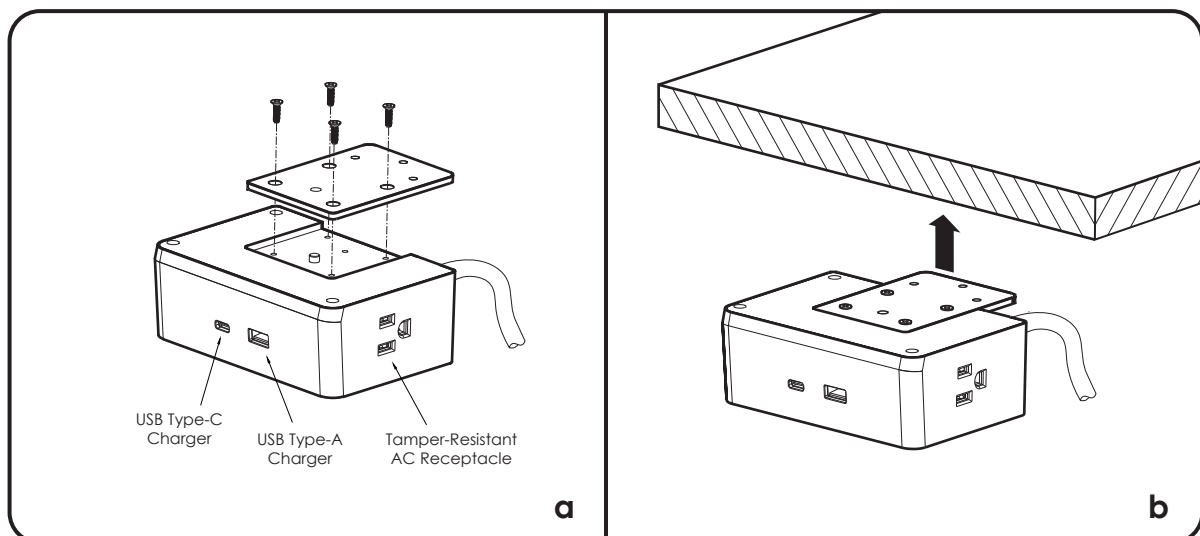
### WARNING:

*To reduce the risk of fire, electric shock or injury to person:*

- For indoor use only
- Do not use with extension cord(s)
- Do not plug a device or devices into receptacles that exceed a total of 15A (1800 watts)
- Do not open or attempt to open the unit for any reason

### INSTALLATION:

- Attach the mounting bracket to the dock by using four included Phillips screws.
- Place the dock under table at desired position, then using three self-tapping or wood screws to secure the dock to the table (Screws not included).
- Plug the power cord into the nearest wall outlet. Do not use extension cord(s)



For further assistance, please contact National Lighting Corp. at +1(888) 428-6886