



## INSTALLATION INSTRUCTIONS

For DOCK-950 Wireless Charger

Input rating: DC 5V, 2A / 9V, 1.75A (Quick Charge power adapter)

Output rating: 5 watts / 10 watts (with Quick Charge power adapter)

**CAUTION:** To prevent the risk of fire and electric shock, please be sure to read all instructions before installing or using this unit.

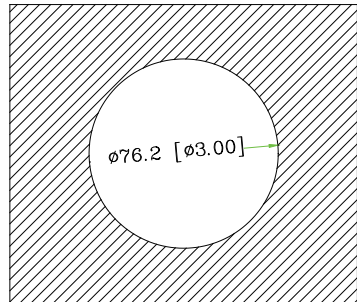
### IMPORTANT SAFETY INSTRUCTIONS

**WARNING – To reduce the risk of fire, electric shock, or injury to persons:**

1. Do not use power supply and cord(s) from 3rd party to connect the unit(s).
2. Do not try to open the unit for any reason.
3. Do not place any metal objects on the wireless charging surface.

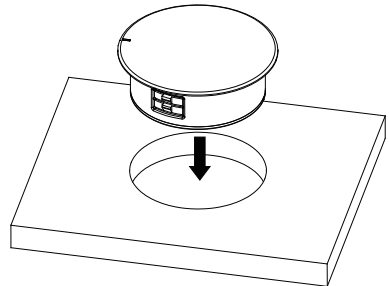
### MOUNTING

1. Bore a 3" hole using the specifications from the illustrations on the right.
2. Push the charger into the hole.
3. Connect the power adapter cord to the input jack on the bottom of the wireless charger.



### USING THIS WIRELESS CHARGER

1. Plug the power adapter to nearest wall outlet.
2. The LED indicator will flash briefly indicating the charger is correctly powered up.
3. Place the Qi wireless charging capable device on the DOCK-950. Blue indicator will be on for 10 seconds when it detects the device being charged. Once the device is fully charged the LED turns green indicating the charging is completed (green indicator works with compatible devices with status feedback functions only).



**Please contact with National Lighting Corp for assistance if any question occurs during installation.**