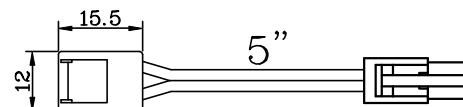


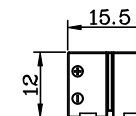
### SPECIFICATIONS

- 8mm (5/16") wide ribbon contains 60 LEDES per meter (18 LEDES per ft)
- Maximum continuous run 10 meters (32.8ft)
- Color temperature (CCT): 6,000 - 6,500K
- Beam angle: 120 degree
- Lumen output: 55 lm/ft
- 1.2W/ft power consumption
- Highly flexible circuit board with 3M™ adhesive tape that can be applied to most accessible surfaces
- Can be cut every 2"
- Powered by DC 12V power supply, low voltage, and low heat
- No UV, no mercury, and RoHS compliant
- Standard package: 16.4ft/roll
- Requires transformer LEDTF-2A or dimmable LED driver
- 3 Year Warranty
- UL &cUL certified for use in USA and Canada

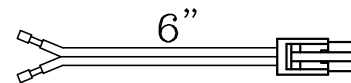
Package includes:




AC907 x 2



AC908 x 2



AC906 x 2

REV	DATE	DRAWN	APPROVED	DESCRIPTION							
 www.nationallighting.com				TOLERANCE (mm [INCH])		DRAWN	YGY	DATE	Feb.21th 2019		
				[mm]		[INCH]		CHECKED	JBX	DATE	Feb.21th 2019
				X ±2.5	XX ±0.1	APPROVED		DATE			
				XX ±0.8	XXX ±0.03	PN	LEDR-ROLLWH				
XX ±0.25	XXX ±0.010	SCALE		VIEW	UNIT	SHEET	DRAWING#				
1:1		mm[INCH]		1 OF 1	C-LEDR-ROLLWH20190221001		REV	A			