

## LEDTL-5 TASK LIGHT SERIES INSTALLATION INSTRUCTIONS

**CAUTION** - To reduce the risk of fire, electric shock, or injury to persons:

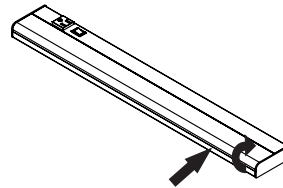
- Use only insulated staples or plastic ties to secure cords.
- Route and secure cords so that they will not be pinched or damaged when the cabinet is pushed to the wall.
- Not intended for recessed installation in ceilings, or soffits.
- Not intended for surface installation inside built-in furnishings such as kitchen cabinets, china cabinets, or trophy cases.

### SPECIFICATIONS

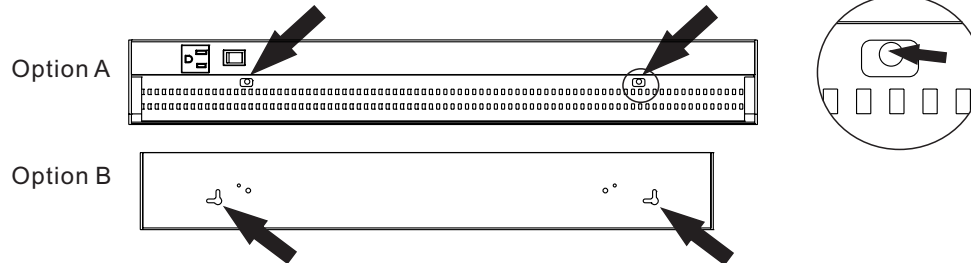
MODEL	INPUT POWER	RATED POWER	SIZE
LEDTL-506W-18	AC 100 – 240V 50/60Hz	6W	18" x 3-1/4" x 1-1/8"
LEDTL-508W-24	AC 100 – 240V 50/60Hz	13W	24" x 3-1/4" x 1-1/8"
LEDTL-512W-36	AC 100 – 240V 50/60Hz	16W	36" x 3-1/4" x 1-1/8"
LEDTL-516W-48	AC 100 – 240V 50/60Hz	24W	48" x 3-1/4" x 1-1/8"

### INSTALLATION INSTRUCTIONS

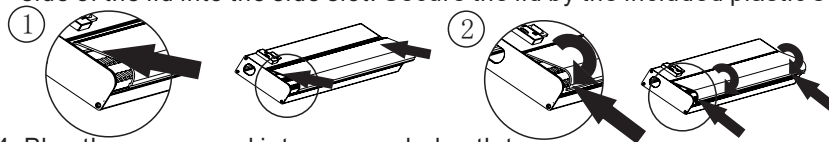
Step 1. Remove lid by pushing the side of lid inward and pull it up



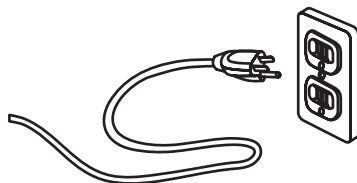
Step 2. Locate the mounting holes/slots on the fixture. You can either use the mounting holes or the mounting slots to mount the fixture. Use the included screws to secure it.



Step 3. Restore the lid by aligning the top side with the slot, and then push the side of the lid into the side slot. Secure the lid by the included plastic screws.



Step 4. Plug the power cord into a grounded outlet.



**National Lighting**  
www.nationallighting.com  
Tel: 1-562-921-0056